

Overview

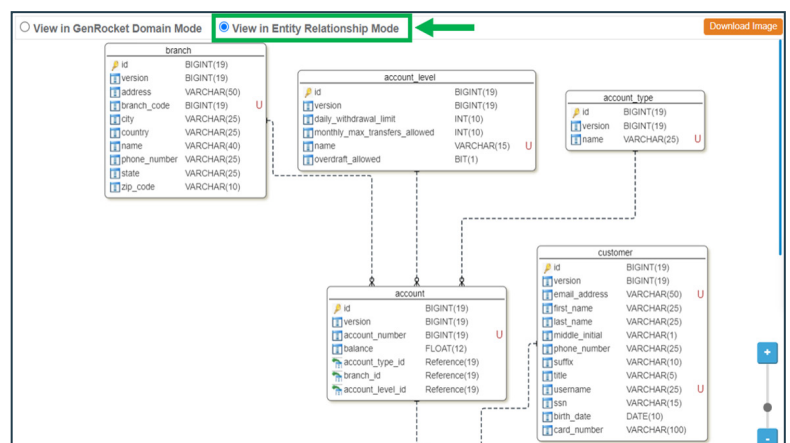
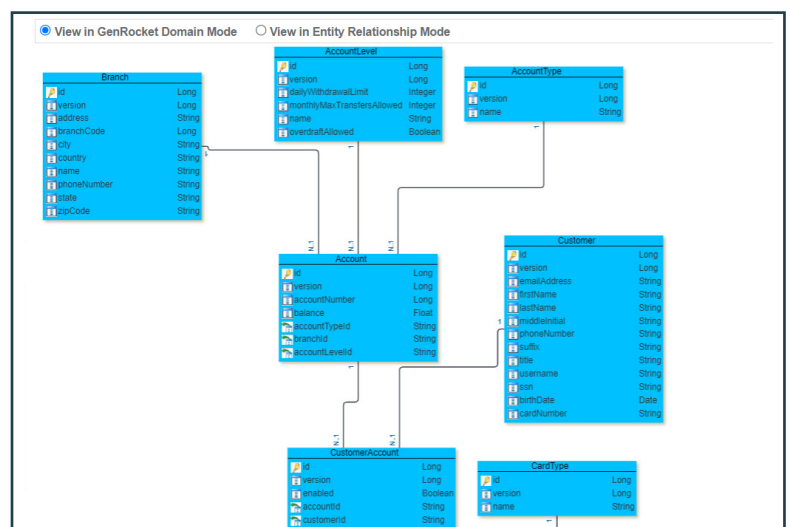
In today's complex data environments, testers and developers face significant challenges in understanding data relationships and creating accurate test data to validate code functionality and performance. Designing data sets for comprehensive test coverage, including positive data, negative data, edge cases, permutations, and end-to-end transaction flows, can be slow and complex.

GenRocket's G-Families address these challenges by visually displaying complex data relationships, grouping related data tables into families, and automating the design of executable Test Data Cases to generate on-demand test data for any category of testing.

G-Families helps discover related Domains ("Families") within an imported Database Schema based on relationships that exist between data tables and domains. With just a few clicks, users can quickly "Design" the *volume and variety* of test data needed for each of the "Family" of domains, using GenRocket G-Case. Ultimately this enables testers to focus on "Domains Under Test" and speed up the testing process.

Key Features

- Group related domains together into "Families" to focus on "Domains Under Test"
- View representation of database structure, in "Domain" and "Entity Relationship" views
- Create test data cases directly from "Families".
- Support for multiple databases schema import methods: XTS, JSON, DDL, and XSD



Benefits

- Visualize complex database relationships and easily focus on key related domains under test
- Categorize (unit, load, negative, etc.) and rapidly create a suite of G-Cases.
- Document your database structure (download image and share) for others in your organization
- Speed up test data case (G-Case) creation by combining the “Model” and “Design” phase of the GenRocket methodology.

Add G-Cases

Suite Name* : Family1 i

Suite Category* : Unit i

Default LoopCount: 1 i

Domains:

<input type="checkbox"/> Check All	LoopCount
<input checked="" type="checkbox"/> Account	5
<input checked="" type="checkbox"/> AccountLevel	
<input checked="" type="checkbox"/> AccountType	
<input checked="" type="checkbox"/> Branch	3
<input type="checkbox"/> CardProduct	
<input type="checkbox"/> CardType	
<input type="checkbox"/> Customer	

[Save](#) [Cancel](#)

For More Information about **G-Families**, visit the **GenRocket Knowledge Base**

[LEARN MORE](#)