



PRODUCT IMPLEMENTATION REFERENCE GUIDE

SECTIONS

- Overview and Context
- Document User Personas
- System Requirements & Runtime Download Instructions
- Virtual Private Cloud Information
- GenRocket Multi-User Server (G-MUS)
- G-Repository
- G-Analytics
- Other Resources

OVERVIEW AND CONTEXT

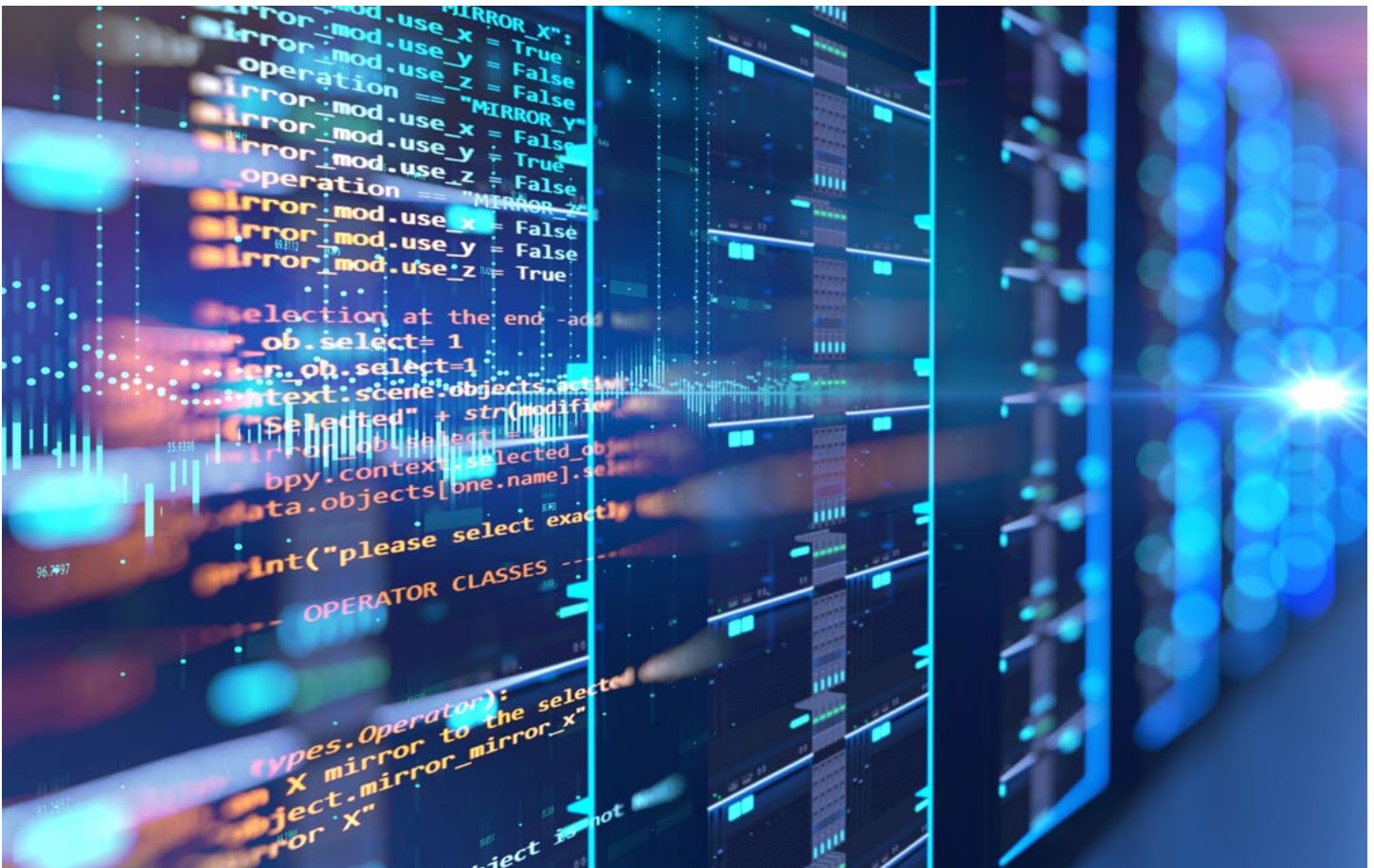
This document is designed as an implementation and referential guide to initial set-up of GenRocket. In this document you will find information about the system requirements, personas of the different users of GenRocket, GenRocket Multi-User Server, and G-Repository.

- Use this document for easy reference materials on the initial set-up of GenRocket and its auxiliary components.
- GenRocket recommends that all users enroll and complete training for their role via our Learning Management System and this document should not be used as a direct substitution to the LMS training.

DOCUMENT USER PERSONAS

- Installation/ Infrastructure Team
- Organization Admins
- Managers

User Persona	User Persona
Installation/Infrastructure Team	<ul style="list-style-type: none">• Runtime requirements• Supported Browsers• Local System Requirements• G-Repository Server• GMUS
Organization Admin	<ul style="list-style-type: none">• Assign User or named server licenses• Assign Teams and Team Permissions• GMUS• SSO
Managers	<ul style="list-style-type: none">• G-Analytics



SYSTEM REQUIREMENTS & RUNTIME DOWNLOAD INSTRUCTIONS

MAC

Instructions specific to Installation in MacOS

- Mac specific Runtime Download Instructions
 - <https://genrocket.freshdesk.com/support/solutions/articles/19000000371-osx-linux-genrocket-initial-installation-and-setup>
- System requirements
 - 4 Core CPU
 - 8Gb RAM
 - Minimum of Java 1.7
 - Supported Browsers:
 - Chrome
 - Firefox
 - Safari
- Reference Article for System Requirements and Installation Overview
 - <https://genrocket.freshdesk.com/support/solutions/articles/19000065317-installation-overview>
 - <https://genrocket.freshdesk.com/en/support/solutions/articles/19000107061-genrocket-runtime-installation-requirements>

WINDOWS

Instructions specific to Installation in a Windows OS

- Windows specific Runtime Download Instructions
 - <https://genrocket.freshdesk.com/support/solutions/articles/19000008152-windows-how-do-i-download-and-install-the-genrocket-runtime->
- System requirements
 - 4 Core CPU
 - 8Gb RAM
 - Minimum of Java 1.7
 - Supported Browsers:
 - Chrome
 - Firefox
 - Safari
- Reference Article for System Requirements
 - <https://genrocket.freshdesk.com/support/solutions/articles/19000065317-installation-overview>
 - <https://genrocket.freshdesk.com/en/support/solutions/articles/19000107061-genrocket-runtime-installation-requirements>

LINUX

Instructions specific to Installation in Linux

- Linux specific Runtime Download Instructions
 - <https://genrocket.freshdesk.com/support/solutions/articles/19000000371-osx-linux-genrocket-initial-installation-and-setup>
- System requirements
 - 4 Core CPU
 - 8Gb RAM
 - Minimum of Java 1.7
 - Supported Browsers:
 - Chrome
 - Firefox
 - Safari
- Reference Article for System Requirements and Installation Overview
 - <https://genrocket.freshdesk.com/support/solutions/articles/19000065317-installation-overview>
 - <https://genrocket.freshdesk.com/en/support/solutions/articles/19000107061-genrocket-runtime-installation-requirements>

VIRTUAL PRIVATE CLOUD (VPC) INFORMATION

The Virtual Private Cloud is the operating environment for the GenRocket App. In order to access the VPC you will need login credentials and for certain uses, specified permissions.

- <https://vimeo.com/370208879>

Installation/ Infrastructure Team

- General installation requirements to provide access to the VPC on Local Machines or servers.
 - <https://genrocket.freshdesk.com/en/support/solutions/articles/19000107061-genrocket-runtime-installation-requirements>

Organization Admins

Organization Admins (Org Admins) are responsible for the User and Team Management

- User Management Overview
 - <https://genrocket.freshdesk.com/support/solutions/articles/19000098508-overview>
- Adding Users
 - <https://genrocket.freshdesk.com/support/solutions/articles/19000000319-how-do-i-add-new-users-to-my-organization->
- Updating User information
 - <https://genrocket.freshdesk.com/support/solutions/articles/19000098510-update-user-information>

- Get User information
 - <https://genrocket.freshdesk.com/support/solutions/articles/19000098511-get-user-information>
- Change Username
 - <https://genrocket.freshdesk.com/support/solutions/articles/19000098512-change-username>
- Enable User
 - <https://genrocket.freshdesk.com/support/solutions/articles/19000098513-enable-user>
- Disable User
 - <https://genrocket.freshdesk.com/support/solutions/articles/19000098515-disable-user>
- Assign User License
 - <https://genrocket.freshdesk.com/support/solutions/articles/19000098517-assign-user-license>
- Revoke User License
 - <https://genrocket.freshdesk.com/support/solutions/articles/19000098516-revoke-user-license>
- Add Role
 - <https://genrocket.freshdesk.com/support/solutions/articles/19000099493-add-role>
- Remove Role
 - <https://genrocket.freshdesk.com/support/solutions/articles/19000099494-remove-role>
- Team Permissions
 - <https://genrocket.freshdesk.com/support/solutions/articles/19000106939-genrocket-team-permissions>
- SSO
 - <https://genrocket.freshdesk.com/support/solutions/articles/19000052964-genrocket-security>

Managers

- Managers (non-testers) can view analytic information related to their organization through the G-Analytics Dashboard without having a commercial license.
 - <https://genrocket.freshdesk.com/support/solutions/articles/19000112686-g-analytics-dashboard-overview>

GENROCKET MULTI-USER SERVER

Even though GenRocket is designed to run on a tester's or engineer's individual laptop or workstation, sometimes it is desirable to have users' access GenRocket via a central application on a single computer.

The GenRocket Multi-User Server (GMUS) allows many users to generate data via a central client application. The GMUS gives client application's the ability to let multiple users simultaneously run GenRocket Scenarios and generate synthetic data. It manages user requests by launching multiple instances of the GenRocket runtime engine, via the GenRocket API, to run multiple GenRocket Scenarios simultaneously.

- <https://genrocket.freshdesk.com/support/solutions/articles/19000078576-genrocket-multi-user-server-gmus-overview>

G-REPOSITORY SERVER

G-Repository is a set of GenRocket feature components that automatically manage the downloading, updating, and deleting of GenRocket [Scenarios](#), [Scenario Chains](#), [Scenario Chain Sets](#), [Story Suites](#), [Story Epics](#), and other Configuration files, to your corporate environment, behind your corporate firewall, and handles the distribution of these components to your corporate GenRocket licensed User's personal computer and your corporate GenRocket licensed test servers.

- <https://genrocket.freshdesk.com/support/solutions/articles/1900011199-g-repository-overview>

G-ANALYTICS

The **G-Analytics** Dashboard can be used to view pre-defined reporting dashboards with the precise information you need to quickly make informed decisions and get the most out of the GenRocket platform. Each dashboard has a pre-configured set of reports that provide detailed statistics regarding Organizations, Projects, Project Versions, Domains, and much more.

- <https://genrocket.freshdesk.com/support/solutions/articles/19000112686-g-analytics-dashboard-overview>

OTHER RESOURCES

- GenRocket Help Desk
 - <https://www.genrocket.com/support/>
- Submit a Support Ticket
 - <https://www.genrocket.com/submit-a-trouble-ticket/>
- Training Enrollment Request Form
 - <https://www.genrocket.com/training-assistance/>
- Knowledge Base
 - <https://genrocket.freshdesk.com/support/solutions>

